

Enterprise 4300

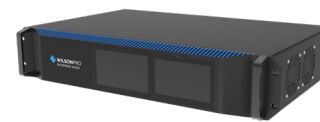
SKU: 460152F

FEATURES

- Three outdoor antenna ports to target multiple carrier towers.
- Four independently controlled indoor antenna ports built in.
- Wired or LTE WilsonPro Cloud access for remote functionality.
- Network Scanning for real-time measurements of cell signal.
- Up to 26 dBm in uplink power.
- 17 dBm in downlink power per port.
- XDR technology to virtually eliminate shutdown or signal loss.
- 4.3-inch LCD touchscreen for an enhanced user-experience.
- Works with ALL phones and cellular devices on ALL carriers.



RACK MOUNT OPTION:



**Enterprise
4300R**

SKU: 460153F

Kit Includes



Enterprise 4300
or Enterprise 4300R
Booster



Outside
Directional Antenna
(314411)



Inside Dome
Antenna x4
(304412)



Lightning Surge
Protector
(859902)



2 ft. Wilson400
Cable
(952402)



100ft Low-Loss
Wilson400 Cable x5
(952300)

About

The WilsonPro **Enterprise 4300/4300R** is a commercial-grade, in-building cellular amplifier that represents the latest in cell signal boosting technology—including a revolutionary industry-first, three outdoor-antenna-port configuration. Depending on cell tower locations, using up to three outdoor antennas (each dedicated to a specific frequency band to collectively amplify signals from multiple towers) helps maximize coverage in commercial spaces up to 100,000 sq.ft.*

Based on user need or preference, the Enterprise 4300/4300R can also utilize “common mode” as a default; using only a single outdoor (donor) antenna and a single port to receive cell signal.

With wired or LTE access (using the built-in cellular modem) to the WilsonPro Cloud for remote functionality, the Enterprise 4300/4300R provides integrators and building managers with the capability to remotely manage, monitor, and adjust their amplifier, as well as receive real-time measurements of cell signal power, bands, frequency, and quality through network scanning. Immediate notification of issues, such as system failure, oscillation, or change in signal strength is also provided via text or email.

The Enterprise 4300/4300R generates up to 26 dBm in uplink power—enabling it to reach towers at much greater distances. With up to 17 dBm in downlink power, it’s also one of the most powerful amplifiers in its price range. With all four indoor-antenna ports equipped with up to 17 dBm downlink power of their own, each of the Enterprise 4300/4300R’s four indoor antennas can effectively broadcast signal. The “R” model name signifies its rack-mount option.

This amplifier includes a 3-year manufacturer’s warranty and a 30-day money-back guarantee.

*Depending on outside signal conditions.

Specifications

MODEL NUMBER	460152F • 460153F	
FREQUENCIES	Band 12/17	700 MHz
	Band 13	700 MHz
	Band 5	850 MHz
	Band 4	1700/2100 MHz
	Band 25	1900 MHz
MAX GAIN	70 dB	
IMPEDANCE	50 Ohm	
POWER	110 - 240 V AC, 50 - 60 Hz, 30 W	
CONNECTORS	N-Female	
BOOSTER DIMENSIONS	19 x 12 x 2.5 • 17.5 x 12 x 3.75 in	
BOOSTER WEIGHT	16.930 lbs • 9.860 lbs	

Detailed Specifications

4300 / 4300R					
SKU	460152F / 460153F				
Model Number	460152 / 460153				
IC ID	4726A-460052 / 4726A-460053				
Connectors	N-Connectors				
Antenna Impedance	50 Ohms				
Frequency	698-716 MHz, 729-746 MHz, 777-787 MHz, 824-894 MHz, 1850-1990 MHz, 1710-1755/2110-2155 MHz				
Power output for single cell phone (Uplink) dBm	700MHz Band12/17	700MHz Band13	800MHz	1700MHz	1900MHz
	22.9	23.1	24.6	22.8	25.5
Power output for single cell phone (Downlink) dBm	700MHz Band12/17	700MHz Band13	800MHz	2100MHz	1900MHz
	16.9	16.7	16.8	16.6	16.6
Noise Figure	5 dB nominal				
Isolation	> 90 dB				
Power Requirements	120V AC 0.5A				

The term "IC" before the radio certification number only signifies that Industry Canada technical specifications were met.

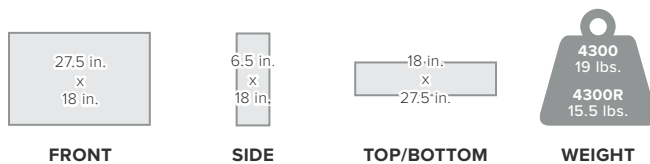
ASSEMBLED IN THE USA



Innovation, Science and
Economic Development Canada

Package Dimensions

27.5 L x 18 H x 6.5 W



MASTER CARTON: None

FOR PARTNER'S USE

Support



3 Year Warranty from Purchase

Website: www.wilsonpro.ca/support

Phone: +1 866 294 1660
Monday to Saturday

UPC

