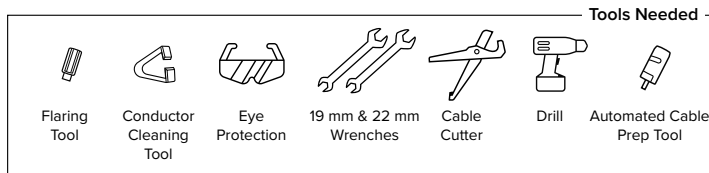


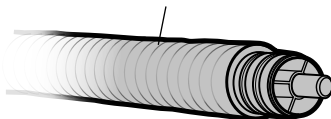


Wilson 1/2 Inch Plenum Cable

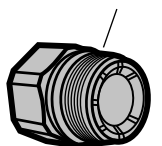
Termination Instructions



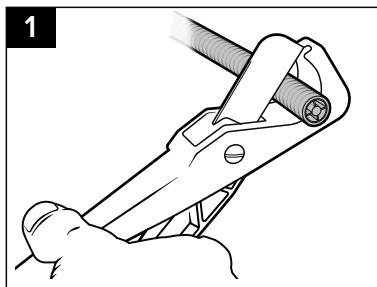
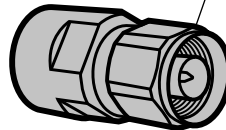
Wilson 1/2 Inch Plenum Cable



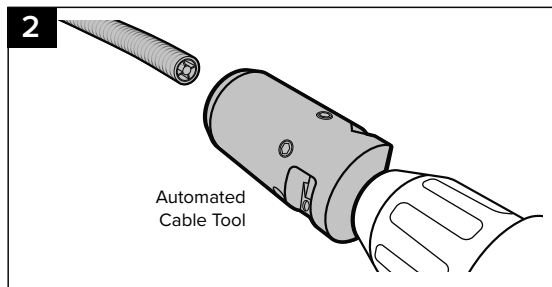
N-Male Connector Base



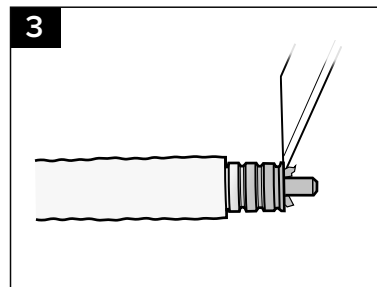
N-Male Connector Top



1
Start with a clean straight cut cable with the appropriate cable cutter.

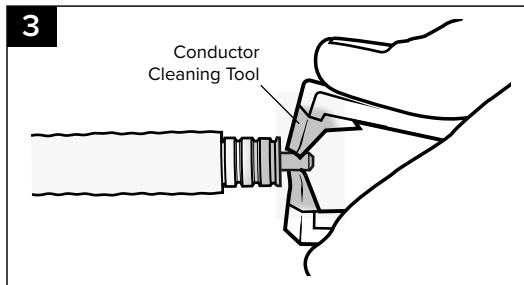


2
Attach **Automated Cable Prep Tool** to a drill and insert cable. While rotating apply steady pressure until cut material is discharged and you feel a change in drill speed. Maintain rotation when removing tool from cable.

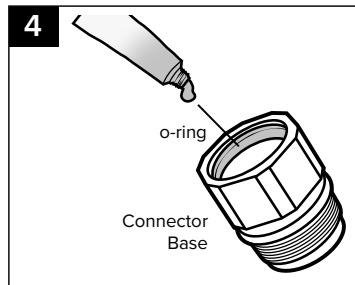


3
Trim any protruding dielectric and thoroughly clean any debris inside.

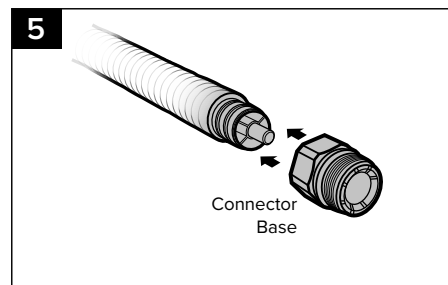
Termination Instructions cont'd



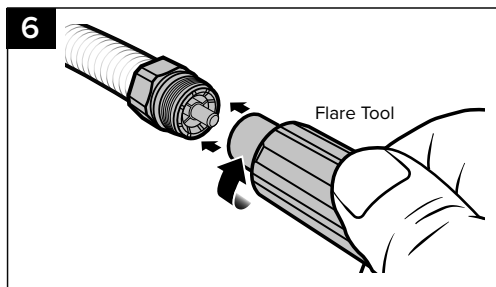
Use a **Conductor Cleaning Tool** to remove any excess clear coat material.



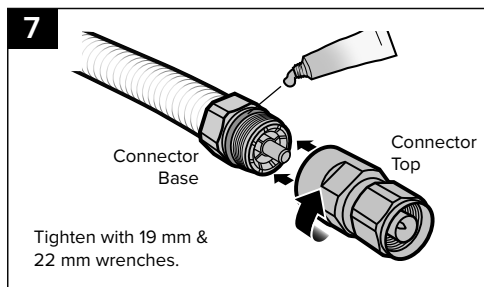
Apply **grease** evenly on o-ring inside **Connector Base**.



Push **Connector Base** onto cable until connector base locks over first corrugation. Outer corrugated conductor should protrude slightly.



Slide **Flare Tool** onto cable and flare outer conductor by rotating clockwise.



Tighten with 19 mm & 22 mm wrenches.

Apply **grease** and screw on **Connector Top** and tighten until the o-ring is no longer visible.

Accessories available from Wilson Electronics



Flare Tool
(#992207)



Automated Cable Prep Tool
(#992206)



1/2" N-Male Connector
(#990074)