

# Enterprise 1300

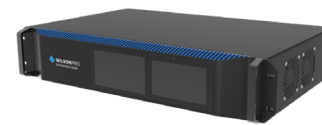
SKU: 460149F

## FEATURES

- Three outdoor antenna ports to target multiple carrier towers.
- Wired or LTE WilsonPro Cloud access for remote functionality.
- Up to 26 dBm in uplink power and 17 dBm in downlink power.
- XDR technology to virtually eliminate shutdown or signal loss.
- 4.3-inch LCD touchscreen for an enhanced user-experience.
- Works with ALL phones and cellular devices on ALL carriers.



## RACK MOUNT OPTION:



**Enterprise  
1300R**

SKU: 460150F

## Kit Includes



Enterprise 1300  
or Enterprise 1300R  
Booster



Outside  
Directional Antenna  
(314411)



Inside Dome  
Antenna  
(304412)



Lightning Surge  
Protector  
(859902)



2 ft. Wilson400  
Cable  
(952402)



100ft Low-Loss  
Wilson400 Cable x2  
(952300)

## About

The WilsonPro **Enterprise 1300/1300R** is a commercial-grade, in-building cellular amplifier that represents the latest in cell signal boosting technology—including a revolutionary industry-first, three outdoor-antenna-port configuration. Depending on cell tower locations, using up to three outdoor antennas (each dedicated to a specific frequency band to collectively amplify signals from multiple towers) helps maximize coverage in commercial spaces up to 40,000 sq. ft.\*

Based on user need or preference, the Enterprise 1300/1300R can also utilize “common mode” as a default; using only a single outdoor (donor) antenna and a single port to receive cell signal.

With wired or LTE access (using the built-in cellular modem) to the WilsonPro Cloud for remote functionality, the Enterprise 1300/1300R provides integrators and building managers with the capability to remotely manage, monitor, and adjust their amplifier, as well as receive real-time updates on a smartphone or tablet. Immediate notification of issues, such as system failure, oscillation, or change in signal strength is also provided via text or email.

The Enterprise 1300/1300R generates up to 26 dBm in uplink power—enabling it to reach towers at much greater distances. With up to 17 dBm in downlink power, it's also one of the most powerful amplifiers in its price range. The “R” model name signifies its rack-mount option.

This amplifier includes a 3-year manufacturer's warranty and a 30-day money-back guarantee.

\*Depending on outside signal conditions.

## Specifications

<b>MODEL NUMBER</b>	460149F • 460150F	
<b>FREQUENCIES</b>	Band 12/17	700 MHz
	Band 13	700 MHz
	Band 5	850 MHz
	Band 4	1700/2100 MHz
	Band 25	1900 MHz
<b>MAX GAIN</b>	70 dB	
<b>IMPEDANCE</b>	50 Ohm	
<b>POWER</b>	110 - 240 V AC, 50 - 60 Hz, 30 W	
<b>CONNECTORS</b>	N-Female	
<b>BOOSTER DIMENSIONS</b>	19 x 12 x 2.5 • 17.5 x 12 x 3.75 in	
<b>BOOSTER WEIGHT</b>	16.515 lbs • 9.66 lbs	

## Detailed Specifications

1300 / 1300R					
SKU	460149F / 460150F				
Model Number	460149 / 460150				
IC ID	4726A-460049 / 4726A-460050				
Connectors	N-Connectors				
Antenna Impedance	50 Ohms				
Frequency	698-716 MHz, 729-746 MHz, 777-787 MHz, 824-894 MHz, 1850-1990 MHz, 1710-1755/2110-2155 MHz				
Power output for single cell phone (Uplink) dBm	700MHz Band12/17	700MHz Band13	800MHz	1700MHz	1900MHz
	23.9	23.9	25.1	23.7	26.7
Power output for single cell phone (Downlink) dBm	700MHz Band12/17	700MHz Band13	800MHz	2100MHz	1900MHz
	16.7	16.8	16.9	16.8	16.8
Noise Figure	5 dB nominal				
Isolation	> 90 dB				
Power Requirements	120V AC 0.5A				

The term "IC" before the radio certification number only signifies that Industry Canada technical specifications were met.

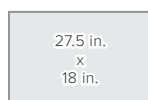
ASSEMBLED IN THE USA



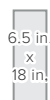
Innovation, Science and  
Economic Development Canada

## Package Dimensions

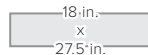
27.5 L x 18 H x 6.5 W



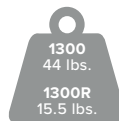
FRONT



SIDE



TOP/BOTTOM



WEIGHT

MASTER CARTON: None

## Support



3 Year Warranty from Purchase

Website: [www.wilsonpro.ca/support](http://www.wilsonpro.ca/support)

Phone: +1 866 294 1660

Monday to Saturday

FOR PARTNER'S USE

## UPC



460149F-460150F\_1300R+1300\_SS\_CA\_032221