

Pro A1010

SKU: 510012

FEATURES

- Boosts 3G, 4G, & 5G signals for large homes and offices
- Coverage area up to 1,000 m²
- For multiple devices and users
- Works on ALL cellular devices with ALL carriers simultaneously
- Enhances talk, text, and high-speed 4G & 5G internet

* **WARNING:** Cancer and Reproductive Harm - www.P65Warnings.ca.gov.



Kit Includes



WilsonPro A1010
Amplifier



Power Supply
(510004)

About

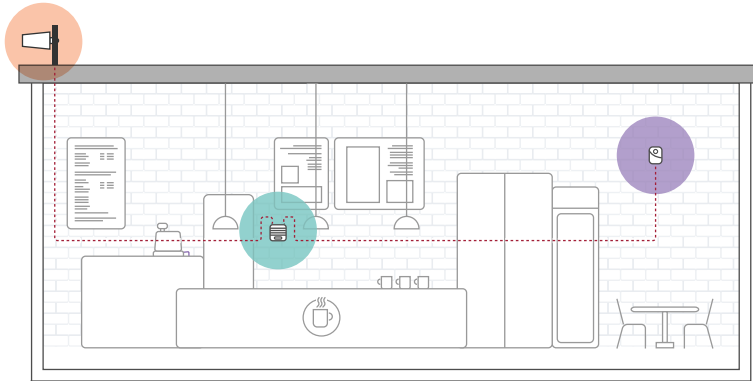
The **WilsonPro A1010** cell phone signal booster is a powerful 4G building booster. WilsonPro A1010 is professional grade, allowing users to get better voice and data with fewer dropped calls, improved voice quality, faster uploads and downloads. This A1010 Booster increases cell signals up to 32x and enhances 4G LTE and 3G signals for buildings up to 1,000 m². Quick and easy installation with easy instructions from our Quick Install Guide.

All boosters come with a 1-year warranty.

Specifications

MODEL NUMBER	510012*	
FREQUENCIES	Band 1	2100 MHz
	Band 3	1800 MHz
	Band 7	2600 MHz
	Band 8	900 MHz
MAX GAIN	868dB(B1) / 65dB(B3) / 75dB(B7) / 66dB(B8)	
IMPEDANCE	50 Ohms	
POWER	5V DC, 1.5A	
CONNECTORS	N-Female	
NOISE FIGURE	5dB nominal	
DIMENSIONS	22.23 x 21.59 x 5.72 cm / 1.25 kg	

How It Works



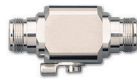
- 1 Receives signal:** The outside antenna reaches out to access the existing strong outdoor cell signal and delivers it inside to the booster.
- 2 Boost signal:** The booster receives the signal, amplifies it, and serves as a relay between your phone and the nearest cell tower.
- 3 Broadcasts signal:** Your devices get a stronger signal, and calls and data are fed through the booster back to the network.

Available Accessories

Optional Antenna Kits



4G Interior Wall Mount Panel Antenna (311135)



Lightning Surge Protector 50 Ohm (859902)



Splitter -3 dB 2 Way (859957)



Wilson 400 Ultra Low-Loss Cable 2ft (952302)



Wilson 400 Ultra Low-Loss Cable 20ft. (952320)



N-Female to N-Female Barrel Connector (971117)

Package Dimensions

8.25 L x 2.25 H x 8.75 W

8.25 in. x 2.25 in.

8.75 in. x 2.25 in.

8.75 in.
x
8.25 in.

2.765 lbs.

FRONT

SIDE

TOP/BOTTOM

WEIGHT

FOR PARTNER'S USE

Support



1 Year Warranty from Purchase

Website: www.wilsonpro.com/support

Phone: +1 866 294 1660
Monday to Saturday

UPC

PRO A1010 - 510012



8 10005 96407 4