

WilsonPro A500

3G/4G 2100 IMT (BAND 1) / 1800 DCS (BAND 3) / 900 E-GSM, GSM (BAND 8)

FEATURES

- Boosts 4G LTE & 3G signals for large homes and offices
- Coverage area up to 500 m²
- For multiple devices and users
- Works on ALL cellular devices with ALL carriers simultaneously
- Enhances talk, text, and high-speed 4G LTE internet



LTE FASTEST NETWORK SPEEDS

UP TO 500 m² COVERAGE

UP TO +70 dB GAIN

MULTI-USER WIRELESS BOOSTER

About

The WilsonPro A500 cell phone signal booster is a powerful 4G building booster. WilsonPro A500 is professional grade, allowing users to get better voice and data with fewer dropped calls, improved voice quality, faster uploads and downloads. This A500 Booster increases cell signals up to 32x and enhances 4G LTE and 3G signals for buildings up to 500 m². Quick and easy installation with easy instructions from our Quick Install Guide.

All parts are included in the WilsonPro A500 kit and friendly trained support staff on call to assist. All boosters come with a 1-year warranty.

Kit Includes



WilsonPro A500



Outside Directional Antenna (314411)



Inside Panel Antenna (311135)



Power Supply (859116)



75' + 60' Black Low Loss Wilson 400 Coax Cables (952375) (952360)

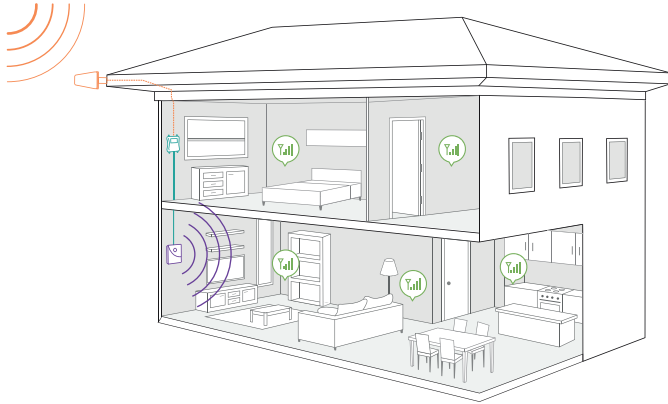
Coverage Area

IF YOUR OUTSIDE SIGNAL IS	YOUR BOOSTED SIGNAL MAY BE
●●●●● -89 AND LOWER About 5 bars	UP TO 500 m ²
●●●●○ -90 dB About 3 to 4 bars	UP TO 250 m ²
●●○○○ -100 dB About 1 to 2 bars	UP TO 120 m ²
○○○○○ No existing	A signal booster likely will not work

Specifications

MODEL NUMBER	520001	
FREQUENCIES	Band 1	2100 MHz
	Band 3	1800 MHz
	Band 8	900 MHz
MAX GAIN	68dB(B1) / 65dB(B3) / 66dB(B8)	
IMPEDANCE	50 Ohm	
POWER	5V DC, 1.5A	
CONNECTORS	N-Female	
NOISE FIGURE	5dB nominal	
DIMENSIONS	22.23 x 21.59 x 5.72 cm / 1.25 kg	

Installation



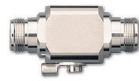
- 1 Receives signal:** The powerful antenna reaches out to access a voice and 3G, 4G, and LTE data signal, and delivers it to the booster.
- 2 Boost signal:** The booster receives the signal, amplifies it, and serves as a relay between your phone and the nearest cell tower.
- 3 Broadcasts signal:** Your devices get a stronger signal, and calls and data are fed through the booster back to the network.

Available Accessories

Optional Antenna Kits



4G Interior Wall Mount Panel Antenna (311135)



Lightning Surge Protector 50 Ohm (859902)



Splitter -3 dB 2 Way (859957)



Wilson 400 Ultra Low-Loss Cable 2ft (952302)



Wilson 400 Ultra Low-Loss Cable 20ft. (952320)



N-Female to N-Female Barrel Connector (971117)